



THOMPSON
SUSTAINABLE HOMES

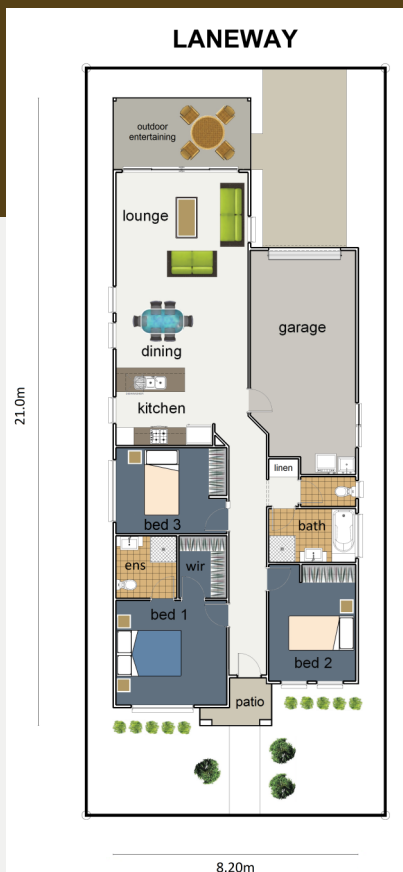


**FITZGIBBON CHASE
HOUSE & LAND PACKAGE
3 BEDROOMS**

\$375,380

Features :

- Lot 213
- Turn Key House & Land Package
- 3 Bedrooms with Built In Robes
- Master Bedroom with large WIR and Ensuite
- Alfresco Dining
- Ceiling fans to all bedrooms
- Tiles to living areas, carpets to bedrooms
- Driveway, letterbox and clothesline
- Landscaping and Fencing allowance
- Fibre to the home internet access
- Estate features parks and walking trails
- Close proximity Carseldine Railway Station
- Easy access to schools, shopping and health services
- Lot Size : 250m² House Size : 148m²



THE 'PENDA'



Disclaimer: Full Package Price is subject to a quote from the Builder after taking into account all site specific factors & finalising the chosen inclusions with Purchaser - Artist Impressions Only

For more information call:

STEPHEN TEE

Ph: 0421 770 502

ENERGY EFFICIENT BY DESIGN

Ph: 07 5457 6500
Fax: 07 5444 4707



Level 1/ 9 Nicklin Way Minyama QLD 4575

www.thompsonsustainablehomes.com.au